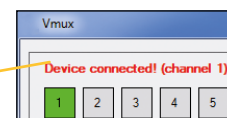


Connecting an instrument

• USB

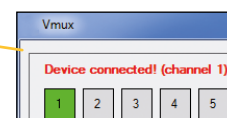
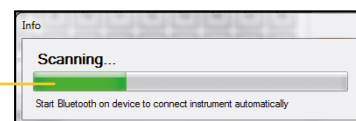
- 1) Connect the instrument via cable
- 2) Wait for a few seconds
- 3) The channel will go green once a connection has been established



The connection is automatically established on the next available channel at the next available output port

• Bluetooth® Technology

- 1) Click on the «BT scan» button
- 2) Activate Bluetooth® on the instrument (menu BT/ON). If the instrument has already been connected to another master, don't forget to reset pairing (menu BT/RESET).
- 3) Wait for connection and activation of services
- 4) The channel will go green once a connection has been established.



A connection (USB or Bluetooth®) is automatically established on the next available channel at the next available output port.

To connect the FootSwitch Bluetooth®, press the main switch to activate Bluetooth® and follow steps 1)/3)/4). The FootSwitch Bluetooth® is not linked to an output port as instruments do.

Disconnecting an instrument

• USB

- 1) Disconnect the instrument's cable or click the cross corresponding to the channel to which the instrument is connected

Channel	Output COM	Input	Instrument	Status	Value
CHA1	COM1	COM17 (BLE)	S_Dial WORK	Connected	+005.001
CHA2	COM2		S_Dial WORK	Disconnected	

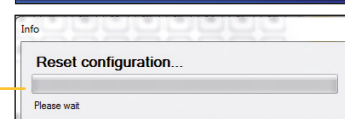
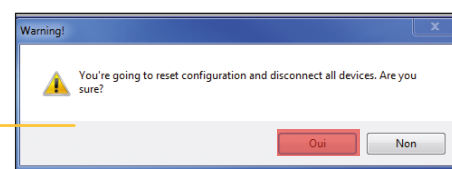
• Bluetooth® Technology

- 1) Deactivate Bluetooth® on the instrument (menu BT/OFF) or click the cross corresponding to the channel on which the instrument is connected, this will erase the pairing if instrument is connected (green cross).

The «Reset Config» button can also be used to disconnect all connected instruments (erase the Bluetooth® pairing for connected instruments)

Reinitialising configuration (disconnecting all instruments)

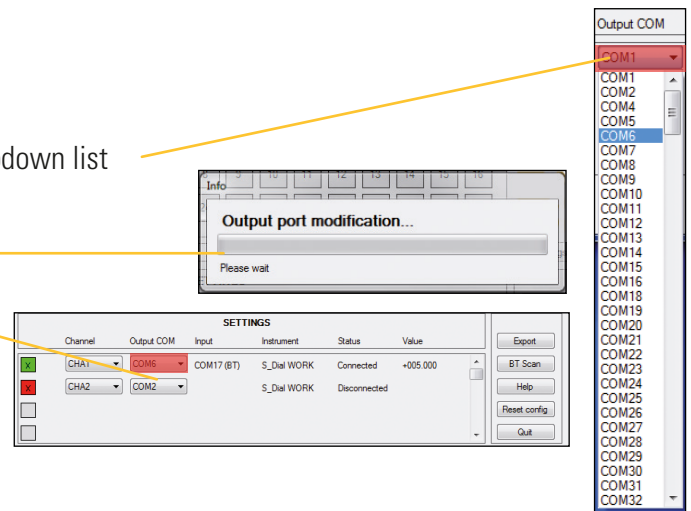
- 1) Click on the «Reset Config» button; a confirmation message will appear
- 2) Confirm your selection to start reinitialisation
- 3) Reinitialisation will be complete after a few seconds



Vmux Quick Startup

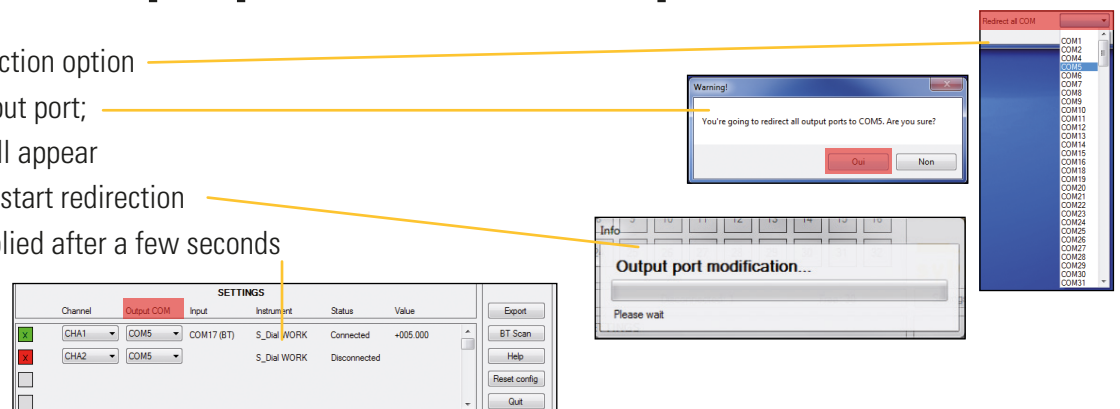
Changing an output port

- 1) Click on the output port (Output COM) to be changed; a dropdown list will appear
- 2) Select the desired output port
- 3) The change will be applied after a few seconds



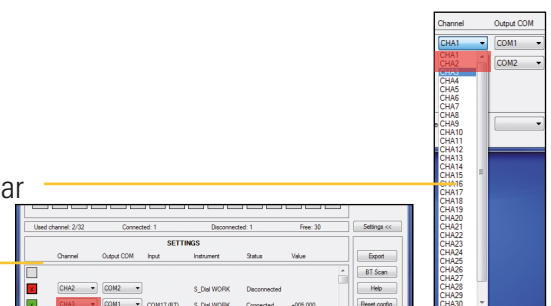
Redirecting all output ports to the same port

- 1) Click on the port redirection option
- 2) Select the desired output port; a warning message will appear
- 3) Confirm your choice to start redirection
- 4) Redirection will be applied after a few seconds



Changing a channel

- 1) Click on the channel (Channel) to be changed; a drop-down list will appear
- 2) Select the desired channel
- 3) The change is applied instantly



Disconnected device
Connected device
Available channel



Basic window

Vmux Quick Startup

Changing active channel

Change active channel by clicking on channel's box number

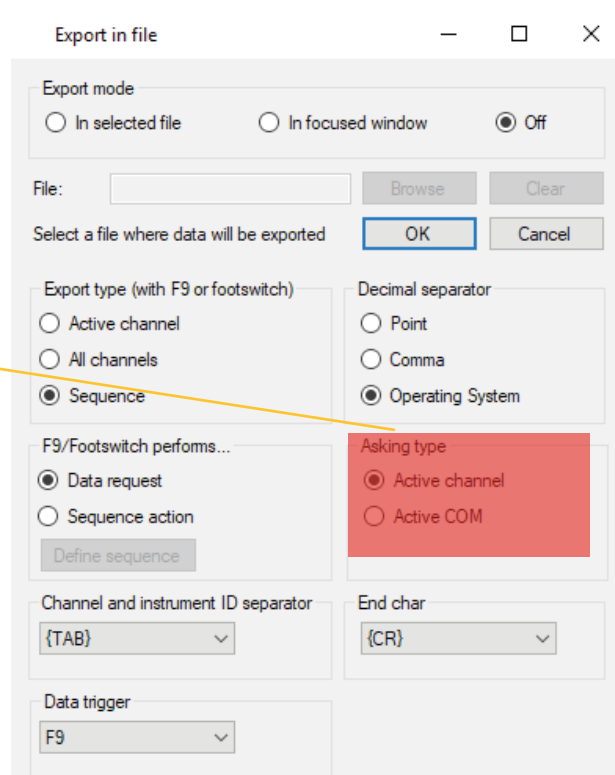
You can also change active channel by sending command "CHAx[cr]" or "ADNx[cr]" (where x is the channel number and [cr] is the carriage return character) to the output port.

Sending data request

Perform a data request by sending command "?[cr]" (where [cr] is the carriage return character) to the output port. It will send a data request to all instruments connected to this output port, or only to the instrument connected on the active channel.

You can edit these parameters in the export menu.

You can send a data request to a specific channel by sending command "CHAx?[cr]" (where x is the channel number and [cr] is the carriage return character) to the output port.



Sending special commands

Send any command (with [cr] as end character) to the output port

You can also send command "CHAx any_command [cr]" (where x is the channel number and [cr] is the carriage return character) if you want to send it to a specific channel.

For example: "CHA1UNI?[cr]" to get unit from instrument connected to the channel 1.

Vmux Quick Startup

Shortcut action

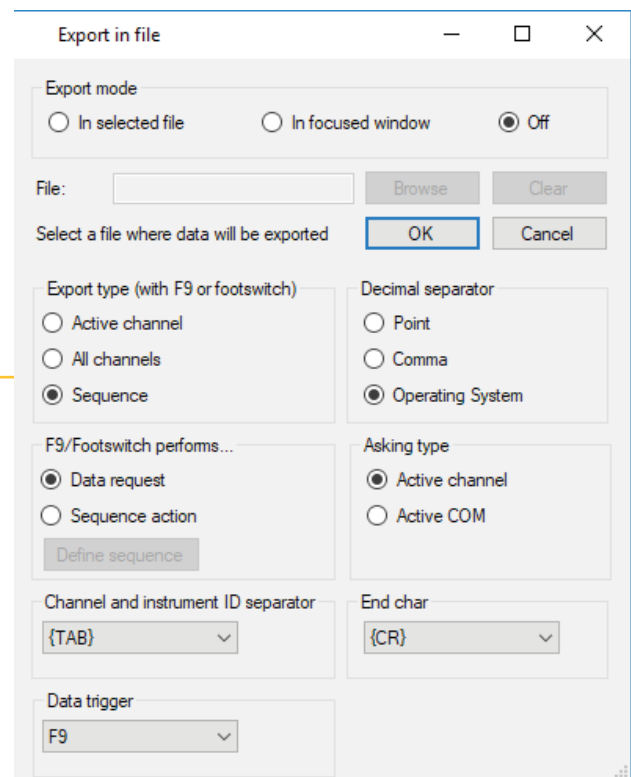
Press F9 key to perform a shortcut action. You can edit this action in the export menu.

You can choose between:

- 1) Data request
- 2) Sequence action

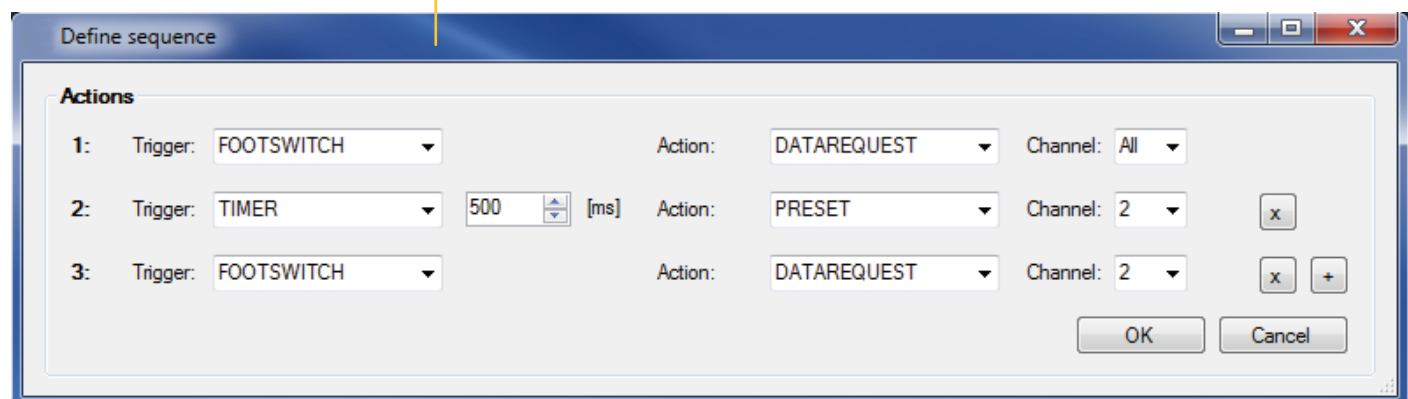
In case of "Data request", action can be defined on following targets:

- 1) Active channel
- 2) All channels
- 3) Sequence (channels one by one)



You can select which data trigger to use to store the measurements : F1 to F12, ENTER, or CTRL+ENTER keys, or Bluetooth® pedal. F9 is generally used by a USB pedal.

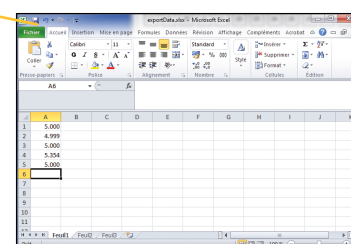
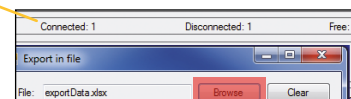
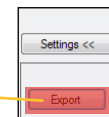
In case of "Sequence action", you can define a sequence up to 12 actions.



Vmux Quick Startup

Exporting data

- 1) Click on the «Export» button
- 2) Select an existing file (Excel, Word, Notepad, etc.) using the «Browse» button
- 3) Confirm your choice using the «OK» button
- 4) Vmux will automatically open the file if it is not already open
- 5) For each data request made using the instrument, data is exported to the specified file at the location selected using the cursor. If several instruments are connected to the same output port, the exported values are separated by a tab



In the export menu you can select the exporting mode to focused window or OFF. You can also select decimal separator, instrument ID separator's character and end character.

On start-up

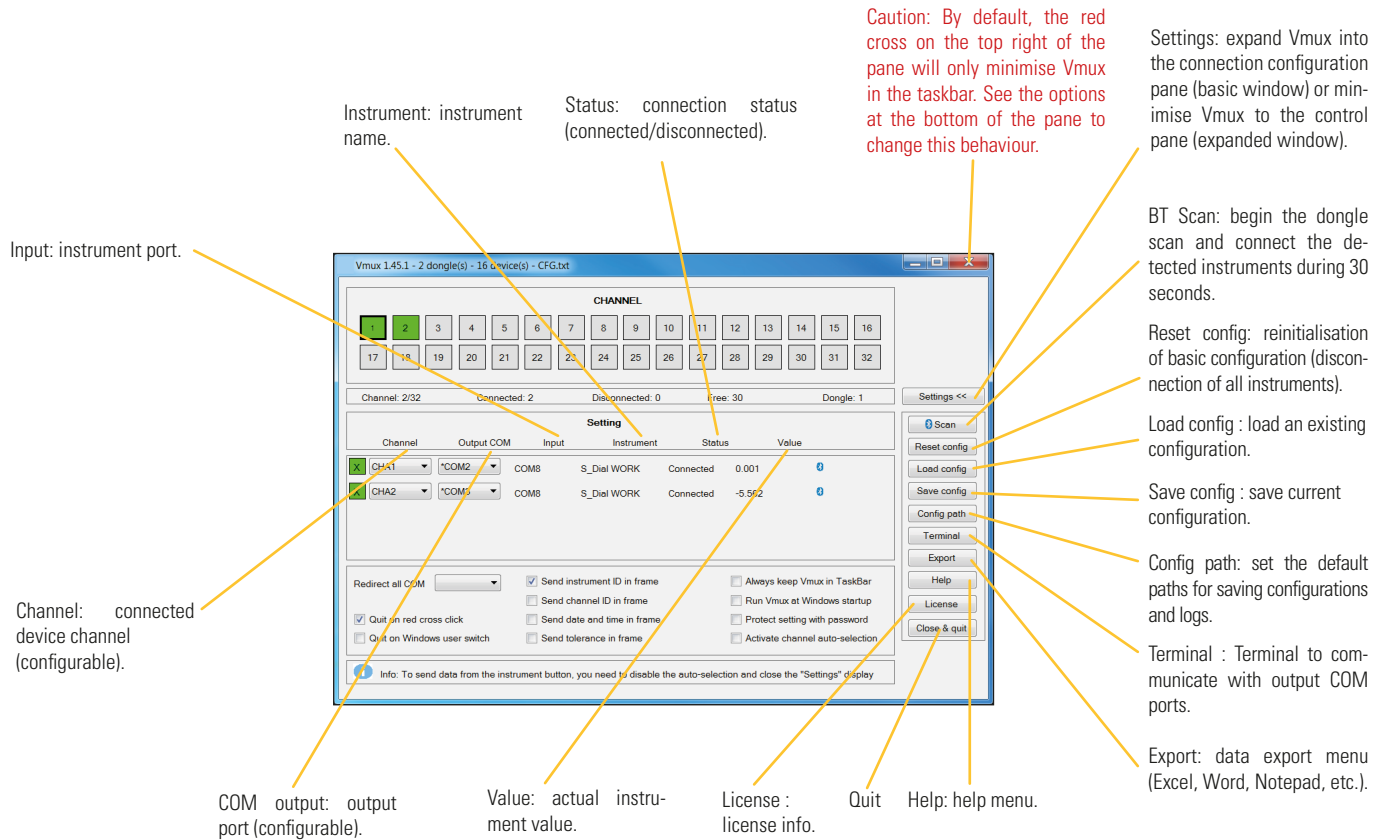
- Vmux will start up with the last existing configuration
- Bluetooth® instruments reconnect automatically if they form part of the last configuration (caution: the instrument's Bluetooth® must be «ON» in order to detect the device)

Features

- 32 available channels (max. 32 USB or max. 16 Bluetooth® and max. 16 USB)
- A maximum of 2 «USB Bluetooth®» dongles
- 8 Bluetooth® devices by dongle
- Instruments can also be connected by USB cable
- Application is compatible with Windows 7, Windows 8 and Windows 10

Vmux Quick Startup

Buttons



Vmux options

- Quit Vmux on red cross click : when pressing the red cross, actually quit Vmux instead of only minimizing the window in the tray bar on the right
- Quit Vmux on switching Windows user : when switching off current Windows session, release the COM ports and allow another user to see the connected devices. Otherwise, it would prevent another user to see the devices.
- Send instrument ID / channel ID / date and time / tolerance in frame : send selected parameters when exporting data (e.g. 04.10.2018 16:48:05 CHA2 S_Dial WORK -005.563[CR])
- Always keep Vmux in TaskBar: when pressing the red cross, minimize Vmux and stay in the task bar (instead of the tray bar on the right)
- Run Vmux at Windows startup : Vmux will be executed automatically when Windows starts
- Protect setting with password : require a password when pressing on the Settings button (reserved to supervisors in order to prevent operators to change the configuration)
- Activate channel auto-selection : the "active" channel selection will change automatically when an instrument value changes quickly. You then don't need to select the "active" channel manually with the mouse.